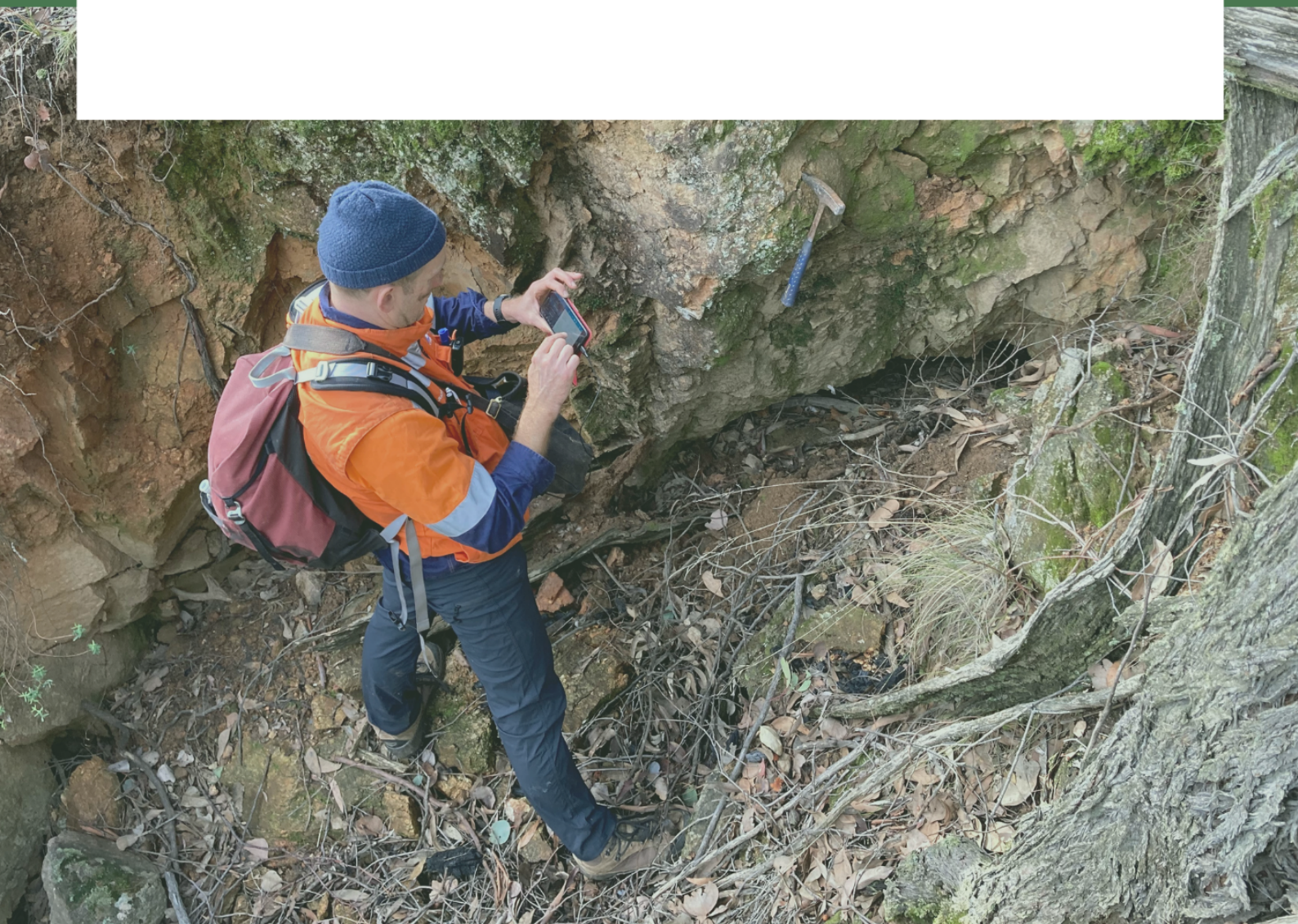


Discover for ArcGIS Pro 2.1

Release Notes



© Copyright 2025 Datamine Corporate Ltd

All Rights Reserved Confidential and Proprietary

Published: Wednesday, 2 April 2025

The information contained in this documentation is subject to change without notice and is not warranted to be error-free. This documentation contains confidential information proprietary to Datamine Corporate Ltd which must not be disclosed, copied, or distributed to any third party without prior written consent of Datamine. Any unauthorised use or disclosure of this information would constitute a breach of confidentiality and would result in legal action.



DISCOVER

 DATAMINE

Contents

Overview	6
Technical Support and Further Information	6
Discover for ArcGIS Pro 2.1 Update 14 (August 2024)	7
Support	7
Table Validation	7
Discover Mobile	7
Source Skip Button	7
Discover Mobile - Primary Key Fields	7
Surpac Merge Multipatch	8
Defect Fixes	8
Discover for ArcGIS Pro 2.1 Update 13 (July 2024)	10
Table Validation	10
Database Location	10
Load Button	10
Defect Fixes	10
Discover for ArcGIS Pro 2.1 Update 12 (May 2024)	11
Defect Fixes	11
Discover for ArcGIS Pro 2.1 Update 11 (May 2024)	12
Scaniverse	12
Defect Fixes	12
Discover for ArcGIS Pro 2.1 Update 10 (January 2024)	13
Defect Fixes	13
Discover for ArcGIS Pro 2.1 Update 9 (October 2023)	14
Sections	14
Defect Fixes	14



Discover for ArcGIS Pro 2.1 Update 8 (October 2023)	15
Sections	15
End of Hole	15
Voxel to Section	15
Defect Fixes	15
Discover for ArcGIS Pro 2.1 Update 7 (October 2023)	16
Ability to Import Layout Template *.pagx	16
Section Layouts	16
Feature to Section	16
Section Templates	16
Downhole Data	17
Import DXF Files	17
Creating Features	17
Licensing	17
Defect Fixes	17
Discover for ArcGIS Pro 2.1 Update 6 (August 2023)	19
Voxels	19
Documentation	19
Strip Logs	19
Defect Fixes	19
Discover for ArcGIS Pro 2.1 Update 5 (August 2023)	21
Drillholes	21
Sections	21
Feature to Section	21
Voxel to Section	21
Rasters	21
Defect Fixes	21



Discover for ArcGIS Pro 2.1 Update 4 (May 2023)	23
Defect Fixes	23
Discover for ArcGIS Pro 2.1 Update 3 (May 2023)	24
Defect Fixes	24
Discover for ArcGIS Pro 2.1 Update 2 (May 2023)	25
Collar Plan	25
Defect Fixes	25
Discover for ArcGIS Pro 2.1 Update 1 (April 2023)	27
Outcrop Mapper	27
Magnetic Declination	27
Topography	27
Defect Fixes	27
Discover for ArcGIS Pro 2.1 (April 2023)	29
New Features	29
Outcrop Mapping	29
Raster Interpolation	29
Geophysical Filters	30
Raster on Section	31
Geophysical Grid Import and Export	32
Voxel to Section	32
3D Section Clip	32
Object to Section	33
Strip Logs	34
Section Plan View	34
Correlation Matrix	35
Surface from Template	35



Overview

Built as a plugin to ArcGIS Pro, Discover for ArcGIS Pro is a comprehensive package for the importation, centralisation and analysis of geoscientific data, whether you are conducting mineral exploration, or environmental assessments.

Import drillhole data from numerous different data repositories and seamlessly refresh data as new data becomes available. Create legends to apply to all of your ArcGIS Pro data types: surface, drillhole, line or point data.

Create section templates to manage all of your section data and styling in 2D or 3D to keep all section data in standard formats and styles across your project. Digitise data, register images on section and seamlessly send this to 3D. Import 2D data and 3D data from a wide variety of common mining data formats and visualise all of this data in the Discover 3D environment.

Discover utilises ArcGIS Pro's unique ability to switch seamlessly from 2D to 3D GIS environments. Share data easily with the Web share function, where 2D and 3D scenes can be shared with colleagues within the organisation, as well as the general public.

Technical Support and Further Information

If you are a licensed Discover for ArcGIS Pro user, you can request support via the Support Portal (<https://www.dataminesoftware.com/support/>) or by emailing support.discover@dataminesoftware.com.

This document includes cumulative release notes since Discover for ArcGIS Pro 2.1.

Release notes for other versions of Discover for ArcGIS Pro are available via the Support Portal.



Discover for ArcGIS Pro 2.1 Update 14 (August 2024)

Support

A new **Support** button has been added to the **Help** group in the **Discover** ribbon, so that you can raise a support ticket directly from the application user interface.

Table Validation

Previously, toggling the **Visible** checkbox off required you to manually clear all other field settings, including **Lookup Table** values and **Default** values. This process was time-consuming and risked data loss if you later needed to re-enable the field with its original configuration.

Now, you can toggle the **Visible** option off without needing to clear other field entries. This makes it much easier to temporarily hide a field while retaining its configuration for future use.

Discover Mobile

Source Skip Button

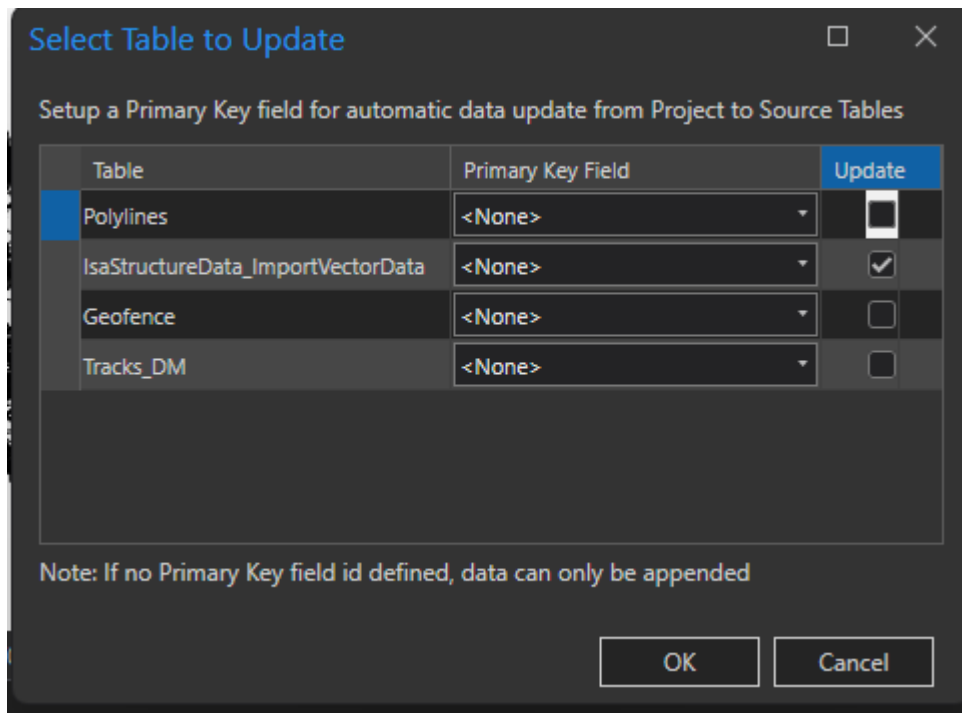
Previously, when you skipped the source update during a mobile project **Check-in**, the system still recorded values for **dm_disc_mobile_timestamp** and **dm_disc_mobile_source_timestamp** in the **.gpkg** file. If you later ran another update without skipping, the system ignored those previously skipped records, leading to inconsistent data syncing. In this update, skipping the source update no longer populates the **dm_disc_mobile_source_timestamp** field.

Discover Mobile - Primary Key Fields

Previously, when setting up **Primary Key Fields** for multiple tables in the **Select Table to Update** window, you had to manually select each table and configure its settings individually. This process was time-consuming, especially when working with several tables during data sync setup.



The dialog now includes a **Select All** checkbox in the **Update** column, allowing you to easily enable automatic updates for all listed tables.



Surpac Merge Multipatch

Previously, when importing wireframes from Surpac, multipatch features were brought in as separate models. This often resulted in cluttered or fragmented geometry, especially for complex wireframes with many segments.

The new **Merge Multipatch** feature allows you to import wireframes as a single, cohesive model.

Defect Fixes

- An issue has been fixed where the **Voxel to Section** process would crash when attempting to convert certain voxel models.
- An issue was identified where vector polygons were not displaying correctly in **Plan** view when using the **Display Voxel on Section** function. Instead of generating proper polygon shapes, the output type polygon produced only horizontal lines. This issue has been resolved, ensuring that vector polygons now correctly render in plan view and plan clip as expected.

- An error previously occurred when saving table validations for structural tables that had text fields marked as **RepeatValue** and were linked to a **Lookup Table**. The system incorrectly displayed an error stating that required fields were not defined. This issue has been resolved, and validations now save correctly.
- An issue has been fixed where importing **Scaniverse** models failed to apply textures if the material file names did not exactly match the OBJ file name.
- Previously, a crash occurred when moving or resizing a section grid map frame in a layout after it had been deactivated, particularly in layouts containing both a section grid and a collar plan. Now, section grid map frames can be moved or resized regardless of their activation state.
- An exception error could occur when panning a section layout map frame, due to inconsistent updates to the grid object references. Sometimes, this only affected the section grid or the collar plan. This has been resolved to ensure all grid elements remain stable when panning within section layouts.



Discover for ArcGIS Pro 2.1 Update 13 (July 2024)

Table Validation

Database Location

You can now select a location for the **Table Validation** database in the Discover **Configuration** dialog.

Load Button

A **Load** button has been added to the **Table Validation** window, allowing you to view all existing table validations and apply one to the current table.

Defect Fixes

- An issue has been fixed where the **Legend to Template** tool did not write the feature class alias when generating a **Section** or **Outcrop** template.
- An issue has been fixed where opening a drillhole project and accessing the section layout caused ArcGIS Pro 3.3 to crash.
- An issue was identified where the **Outcrop Section Grid** did not automatically update when resizing the map frame or changing the map frame scale. This has been fixed to ensure the outcrop grid layout dynamically updates in response to map frame adjustments, aligning its behaviour with the section grid layout.



Discover for ArcGIS Pro 2.1 Update 12 (May 2024)

Defect Fixes

- An issue has been fixed where importing a Geosoft colour table resulted in incorrect colour assignments when colour text names were abbreviated.
- An issue has been fixed where selecting an input grid from a geodatabase in the **Geophysical Filters** tool caused the application to crash.
- An issue was identified where creating a new legend in the **Legend Editor** incorrectly copied rows from the currently displayed legend, leading to a crash when attempting to delete rows. This has been resolved by ensuring the new legend initialises with the correct back-end data.
- An issue has been fixed where applying a legend to a layer caused a crash when the layer was sourced from a GeoPackage (GPKG).
- An issue was identified where the **Back to Source** function did not transfer point data correctly when using **Append** mode and selecting **None** as the primary key for the clipped layer. This has been fixed to ensure that point data is properly copied back to the source table, even when no primary key is specified.



Discover for ArcGIS Pro 2.1 Update 11 (May 2024)

Scaniverse

The **Scaniverse Import Tool** has been added to the list of external data importers.

Defect Fixes

- An issue has been fixed where importing a **Datamine Block Model** sometimes failed or did not properly load the expected data. The import process has been improved to ensure compatibility and reliability.
- An issue has been fixed where **Discover Mobile** project **Check-in** would crash if a photo entry was empty, preventing successful synchronisation of project data.
- An issue has been fixed where the **Import Drillholes** function in **acquire** was not working as expected.
- An issue has been fixed where ArcGIS Pro would crash when attempting to add a control point in the **Register Image** tab of the **Local Grid** tool without an active map window.



Discover for ArcGIS Pro 2.1 Update 10 (January 2024)

Defect Fixes

- An issue has been fixed where refreshing the drillhole project did not update the drilling map, requiring users to manually drag the collar and trace tables to see new information.
- The error message for invalid section names in **Batch Generate Section** was unclear, making it difficult for users to identify and resolve naming issues. The message has been improved to provide clearer guidance on the naming requirements.



Discover for ArcGIS Pro 2.1 Update 9 (October 2023)

Sections

- When refreshing sections after updating the drillhole database, you can now choose from the following options:
 - **Preserve Current Symbology**— Maintains the existing appearance, including manual modifications made via ArcGIS Pro **Symbology** controls.
 - **Reapply Section Settings**— Reapplies the original section settings, overwriting any changes made.
 - **Custom Drill Trace Settings**— Allows you to apply a saved **.svd** template file to customise drill trace labels and symbology.
- The icons in the **Downhole** data window have been updated.

Defect Fixes

- An issue has been fixed where **Section Envelopes** were not turned on by default in the **Layout** window when using the tool on a **Plan** map.
- An issue has been fixed where the surface drape displayed overlapping or multiple line segments, causing visual inconsistencies and misplacement of labels. The rendering process has been improved to correctly align line segments and labels.
- An issue has been fixed where selecting the **Tabloid** paper size along with **Edge Ticks** in the **Section Layout** resulted in oversized edge ticks, affecting the clarity of the output.



Discover for ArcGIS Pro 2.1 Update 8 (October 2023)

Sections

End of Hole

When creating a section, you can now select your **End of Hole** (EOH) symbol and **Intersection** symbols.

Voxel to Section

The **Voxel to Section** function has been optimised, enabling faster processing of multiple sections.

Defect Fixes

- An issue was identified where **End of Hole (EOH)** labels added to 3D drillholes in a scene defaulted to a 'blank' symbol, causing the labels to be invisible. This has been fixed so that EOH labels now display correctly by default.
- An issue has been fixed where clipped project tables in GeoPackage (GPKG) had their fields automatically sorted in alphabetical order instead of preserving the original field order.
- An issue has been fixed where non-English characters in field names were being replaced with underscores during vector data import.
- An issue was identified where users were unable to digitise in template layers for outcrop mapping in 2D when using ArcGIS **Feature Edit**. Attempts to digitise did not persist in the template layers. This has been fixed so that digitised features now correctly save and display as expected.
- An issue has been fixed where using **Apply Downhole Data** caused the drillhole layer symbology to revert to the default style.



Discover for ArcGIS Pro 2.1 Update 7 (October 2023)

Note: This version of Discover for ArcGIS Pro is compatible with ArcGIS Pro 3.0 and 3.1.

Ability to Import Layout Template *.pagx

The .PAGX file is a newly available **Layout** template file in Discover for ArcGIS Pro. The **Layout** template file can have titles, legends, north arrows, and so on. Users can load this template and insert the sections directly into the **Layout** template. The section map is customisable with a specific company layout.

Section Layouts

The **Section Layout** panel includes a new option called **Multiple Sections**, which displays all drillhole sections (vertical and plan) that can be made into a layout.

Feature to Section

The **Feature to Section** function now enables users to import a DXF file onto a section. Previously, only Geodatabase multipatches could be imported. DXF is a commonly used file format; however, the ArcGIS Pro DXF import tool is slow. The new **Feature to Section** function is quicker and enables filtering of fields and selection of a Coordinate Projection Systems (CRS) projection.

Section Templates

Changes were made to the architecture of Discover for ArcGIS Pro to improve the speed of section creation with section templates.



Downhole Data

For **Linegraphs** and **Bargraphs** displayed on strip logs, users can configure whether to display the log scale text above or below the strip log.

Import DXF Files

External drawing files in DXF format can be imported into Discover for ArcGIS Pro. This tool allows users to select the fields to import, the Coordinate Reference System (CRS), the feature type and whether single or multiple features are created based on a field attribute.

Creating Features

Changes were made to the architecture of Discover for ArcGIS Pro to improve the speed of creating **Voxel to Section** features.

Licensing

Some customers in larger highly managed environments were having trouble connecting to a remote licence server and could not receive or exchange licences. This version supports Hypertext Transfer Protocol (HTTP) for licence access and transfer.

Defect Fixes

- Non-English languages with tildes and accents were not being displayed in field names, which was causing issues matching fields from the Discover for ArcGIS Pro plugin and the **Discover Mobile** app. The field matching issue also caused crashes in the **Discover Mobile** app. This issue has been resolved.
- Crashes could occur when a user was trying to create a raster. Extra crash logging has been implemented to make it easier to identify the source of and resolve crashes.
- Previously, if a user closed a mobile project and re-opened the project in the same ArcGIS Pro session, the **Map** pane would not activate. Changes were made to fix this issue.



- An error that occurred when overwriting a section plan that contained a raster or topography has been fixed.
- Previously, when the **Section Manager** was running a process, it was possible for a user to conduct another process, such as opening a section and deleting a section. Changes have been made to block such concurrent processes.
- An issue has been fixed where the **Feature to Section** tool was running out of memory due to large datasets being loaded. Now, CRS and attribute definitions are stored once instead of per record. Invalid triangle data is filtered out. The attribute selector in the **Feature to Section** tool reduces the data to be loaded. Attributes are re-read from the input feature class instead of being stored in the internal data structure. The **Feature to Section** tool works faster as a result of these changes.
- An issue has been fixed where users were not able to import **Mapinfo Pro** tab files with the 2008 coordinate projection bounds.
- Previously, if an interval was truncated (for example, an interval is 100m long and you define the log as 50m) the interval portion displayed on the log was not coloured. Changes were made to fix this issue.
- Geodatabase domains were being deleted by the **Section Template Manager** tool when creating or modifying a feature class. Now, for existing templates, the template shape type, name, and field types are read only. Users can still add new fields or delete existing fields.



Discover for ArcGIS Pro 2.1 Update 6 (August 2023)

Voxels

The **Voxel to Section** function has been optimised for improved performance and faster processing.

Documentation

We're updating the server location for Discover Online HTML documentation to improve accessibility and consistency across our product suite. The latest Discover for ArcGIS Pro help will be available at <https://docs.dataminesoftware.com/Discover/index.htm>.

Strip Logs

The **Strip Log** tool now includes improved functionality for selecting boreholes, making it faster and more intuitive to work with your data. When entering a **HoleID**, the tool now filters the list in real time, helping you more quickly locate and select the desired drillhole.

Defect Fixes

- An issue was identified where the **Map Scale** option was missing in the new **Downhole Data** panel for all object types except **Depth**. This issue has been fixed.
- An issue was identified where importing OMF multipatch data failed for certain datasets. The import process has been improved to handle these cases correctly, ensuring reliable data loading for all supported OMF multipatch files.
- An issue has been fixed where the column header did not appear when creating a strip log, causing incomplete report formatting.
- An issue with ribbon menu drop-downs prevented users from re-selecting the same menu item after using the **Back** button. Previous selections are now



properly cleared when returning to the main menu, allowing users to re-select the same option as expected.

- The **Voxel to Section** tool was taking several minutes to display data on a single section, even when the same voxel loaded quickly in ArcGIS Pro. This performance gap made the workflow feel unresponsive, especially with large Geosoft voxel datasets. Processing has been optimised to significantly reduce the time required to extract and display voxel data on sections.
- In the updated **Downhole Data** panel, the **Map Scale** option was missing for all object types except **Depth**, reducing user control over how data was visualised. The **Map Scale** option has now been restored across all relevant object types.



Discover for ArcGIS Pro 2.1 Update 5 (August 2023)

Drillholes

A new filter function is available when using the **Import from ODBC** option to import drillholes.

Sections

Feature to Section

The **Feature to Section** function has been optimised, enabling faster processing of large multipatch intersections.

Voxel to Section

The **Voxel to Section** function has been optimised, for more efficient processing of multiple sections.

Rasters

The **Create Raster** function now supports shapefile layers and other layer types, eliminating the need to import them into a file geodatabase.

Defect Fixes

- When creating a new drillhole project, the **Section_Template.gdb** did not automatically open, requiring users to manually add it via drag-and-drop or by remapping the database. This issue has been resolved.
- An issue has been fixed where changing field types and widths during drillhole import did not affect the feature class table's field structure.



- An issue where **Downhole** structure fields were not displaying in the **Drilling** or **Section** map has been resolved.
- An issue has been fixed where surface drape lines were overlapping in section views, causing the actual data to be hidden.
- Previously, Discover for ArcGIS Pro could crash when using the **Feature to Section** tool if an attribute value did not match the expected input type. The application has been updated to better handle mismatched attribute values.
- Previously, importing block model data from an OMF file containing a mix of scalar and non-scalar bands could cause Discover for ArcGIS Pro to crash. This issue has been fixed so that the import process now correctly handles different band types.



Discover for ArcGIS Pro 2.1 Update 4 (May 2023)

Defect Fixes

- An issue has been fixed where the Fusion X connection link was not functioning, preventing users from establishing a connection.
- An issue was identified where the **Bargraph** settings for **Downhole Data** did not allow users to set a negative offset, while other graph types like **Linegraph** worked correctly. This has been fixed to ensure users can now set negative offsets as expected.
- An issue was identified where the **Mobile Photo Extractor** tool would crash if the photo field name included a question mark symbol. This has been fixed to ensure the tool handles special characters properly.
- When using the **Features to Section** tool in **Intersect** mode on reversed sections, the resulting intersections were incorrectly positioned due to the section orientation not being accounted for. This issue did not affect project features or other modes, but has now been fixed.



Discover for ArcGIS Pro 2.1 Update 3 (May 2023)

Defect Fixes

- An issue has been fixed where importing Geosoft files would hang when processing plan grids, preventing users from completing the import.
- An issue has been fixed where using the **Feature to Section** tool in **Intersects Mode** caused ArcGIS Pro to crash.
- An issue was identified where switching between different drillhole projects in ArcGIS Pro caused the ribbon menu to become inactive. This has been resolved to ensure that the ribbon menu remains active when switching projects.
- An issue was identified where trench lines were not displayed if the survey line did not start at depth 0, particularly when the **None (Survey Length)** option was enabled without specifying a length field. This has been fixed to ensure trench lines are correctly generated and displayed.
- An issue has been fixed where ArcGIS Pro would crash when opening a project while offline when using offline ArcGIS and Discover licenses.
- The import of collar data into **Drillhole Planner** was being blocked by both optional and mandatory validation errors, such as dip sign discrepancy and invalid dip ranges. The import process has been updated to only block mandatory validation issues, allowing other errors to be reviewed later.
- A crash occurred in DEBUG mode during validation when checking for collar name mismatches. This issue has been fixed to ensure stability during development and testing, with no impact to users running release builds.
- The **Import Vector** tool previously failed to read coordinate system information from NativeX TAB files because it relied on an outdated vector import method that did not support NativeX formatting. The import process has been updated to properly handle NativeX TAB files.
- Grids imported using the **Import Geosoft** tool were occasionally causing the application to hang. This issue has been resolved by improving validation and error detection for unsupported or problematic grid formats.



Discover for ArcGIS Pro 2.1 Update 2 (May 2023)

Collar Plan

The **Collar Plan** tool now supports creating and displaying section plan maps at custom depths, not just on the topographic surface. This enhancement allows you to define plans at specific elevations, with an adjustable vertical envelope, so you can focus on particular intervals of the drillhole traces.

Defect Fixes

- An issue where the outcrop section grid was missing the vertical grid lines has been resolved.
- An issue where the **Import Table from SQL Database** function did not work on certain tables has been fixed, allowing successful data imports.
- An issue where generating a south-facing section caused the plan view to be reversed has been corrected, ensuring accurate orientation.
- An issue has been fixed where the drillhole set-up incorrectly required a value for the **Total Length** field during project **Validation**, despite being marked as optional.
- An issue has been fixed where selecting the **None - Horizontal Distance** option without defining a **DIP** field resulted in no validation errors but caused an error after processing.
- An issue where the **Import Geosoft** function did not work for section files with an uppercase file extension **.GRD** has been resolved.
- An issue has been fixed where, in trench-only drillhole projects, attempting to modify the project without making any actual changes triggered a **Table must be defined** error. This occurred because the dip validation check was incorrectly expecting drillhole collar data.
- Modifying a drillhole project after its source Excel file had been deleted or renamed previously caused the dialog to hang without displaying an error message. This issue has been resolved by adding proper error handling for missing Excel tables.
- On some systems with multiple .NET 6 versions installed, the geoprocess tools failed to load due to a crash in the Python .NET integration. The Python



.NET component has been updated to ensure compatibility with multiple .NET runtimes.



Discover for ArcGIS Pro 2.1 Update 1 (April 2023)

Outcrop Mapper

Magnetic Declination

Outcrop now automatically calculates magnetic declination to improve the accuracy of bearing inputs and streamline data entry. A new **Calculate** button has been added to the **Outcrop Bearing** control, providing quick access to a dedicated **Magnetic Declination** dialog.

This dialog allows you to calculate declination using either the photo's creation date (which is filled in by default) or a custom date. You can easily switch between these options using radio buttons and enter a custom date through a validated input field or date picker. This enhancement ensures that declination values align with the appropriate time-frame for your data.

Topography

Previously, when users added a Digital Terrain Model (DTM), it was imported only as an elevation surface that could be viewed in 3D. While this format was useful for terrain-based calculations, elevation surfaces were not easily visible on the map, often appearing as blank or white layers that provided little visual feedback. Now, the outcrop can be added as a 2D layer in the **Map** window and can be visualised with other GIS data.

Defect Fixes

- The **Blob** field type option in the **Outcrop Template Manager** has been removed, as it is not supported on mobile. Users now only see field types compatible with both desktop and mobile environments, ensuring consistency across platforms.
- An issue has been fixed where creating a **Feature to Section** could result in a missing section definition and cause the software to crash.



- An issue has been fixed where newly added outcrop template layers were not included in the mobile project after re-linking the outcrop project in the **Mobile Manager**.
- An issue where some buttons in the Drillhole **Project Setup Window** did not appear has been resolved.
- An issue where the **Activate License** function was not working has been resolved.
- An issue has been fixed where moving an ArcGIS project to a new location caused errors when opening or checking in a mobile project.
- An issue where users were unable to preview a mobile project has been resolved.
- An issue where mobile projects could not be opened in the mobile app if the source table name started with a number has been resolved.



Discover for ArcGIS Pro 2.1 (April 2023)

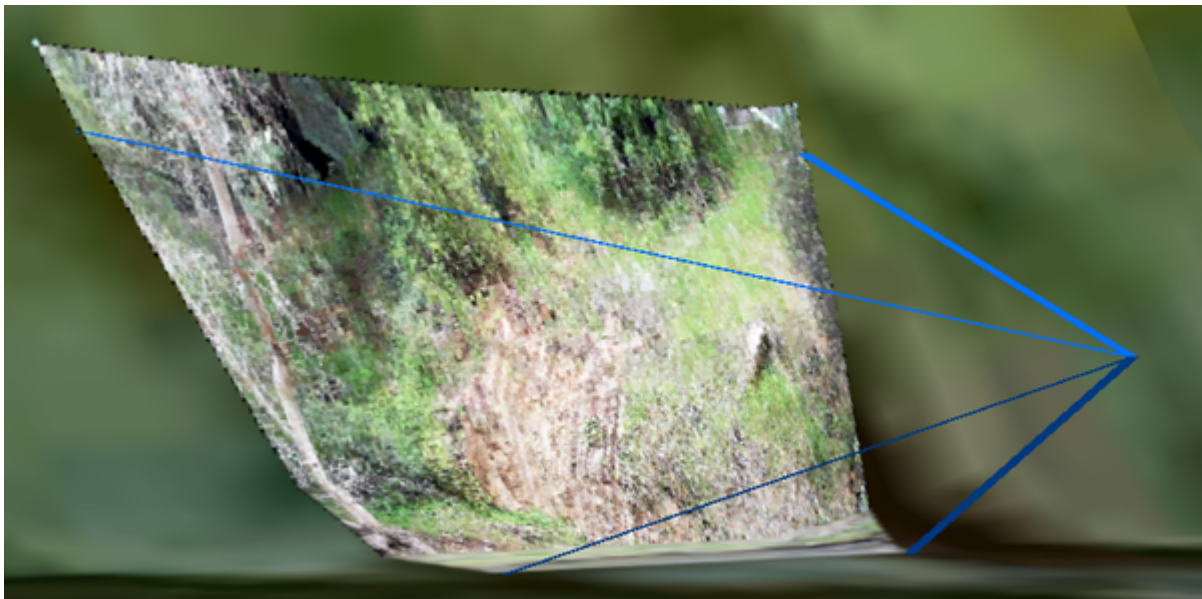
Note: This version of Discover for ArcGIS Pro is compatible with ArcGIS Pro 3.0 and 3.1.

New Features

Outcrop Mapping

The Outcrop Mapping functionality lets you create Outcrop Mapping projects with template tables that you can annotate in the field. The Outcrop Mapping project can be appended to a Mobile project, which you can export to a mobile device.

You can take pictures of outcrops in the field and annotate them at the face using your mobile device. The outcrops can then be imported back to the desktop and draped on a surface in 3D or as 2D-sections based on the location data and other image metadata generated by the mobile device.



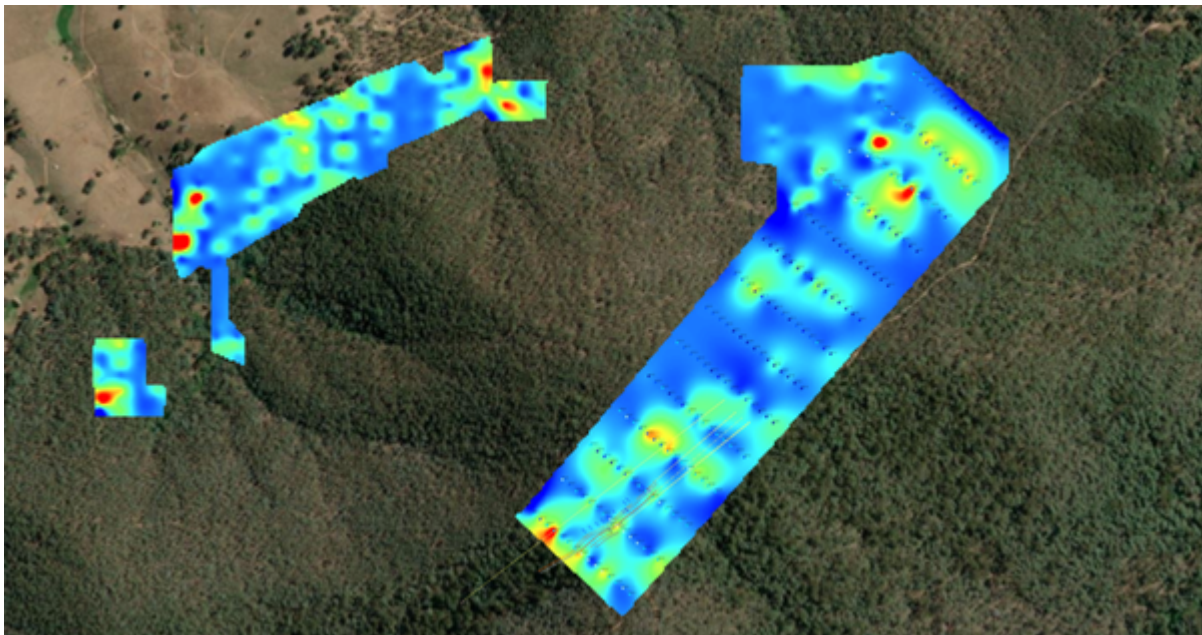
Raster Interpolation

Create single or multi-banded rasters from vector data based on multiple variables.



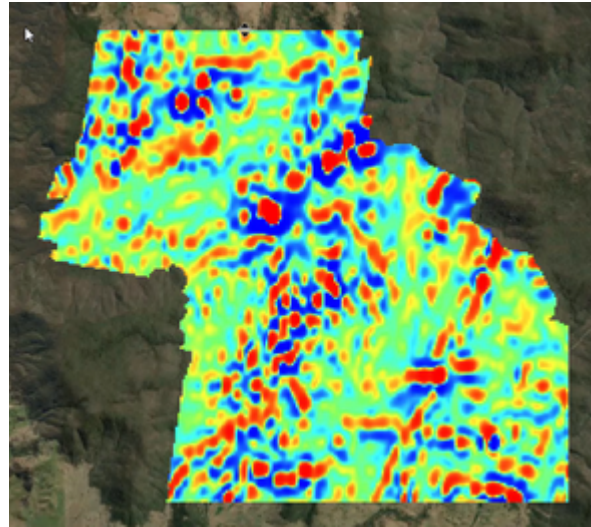
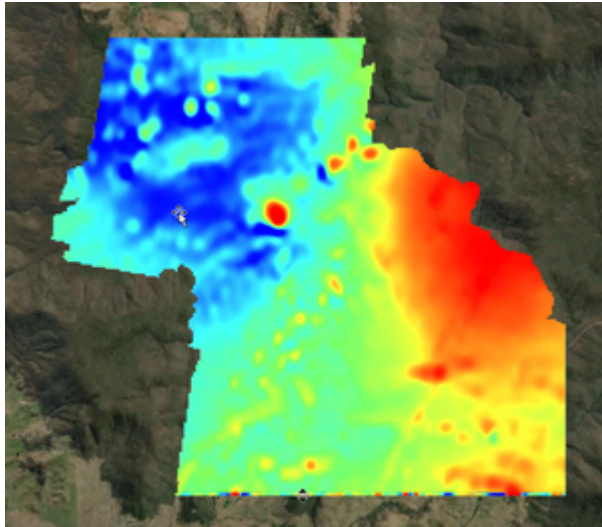
The raster can be colored by stretch or RGB. Color ramps from common geophysical formats can be imported from CLR, LUT or TBL files. The following methods for raster interpolation are available:

- Triangulation
- Minimum Curvature
- Spatial Neighbour
- ID2
- Density
- Distance
- Color Ramp Importers



Geophysical Filters

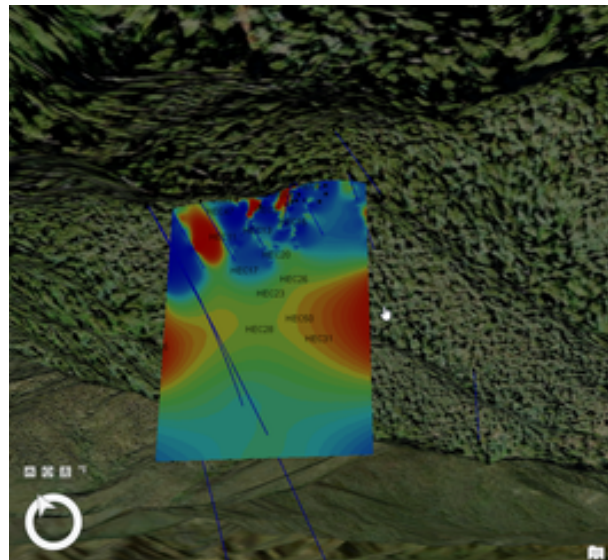
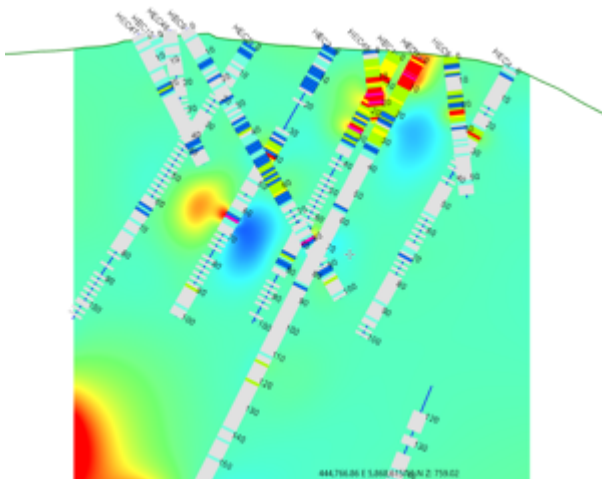
After you have created your raster files, you can apply geophysical filters to bring out the required details. There are 101 different geophysical filter types.



Raster on Section

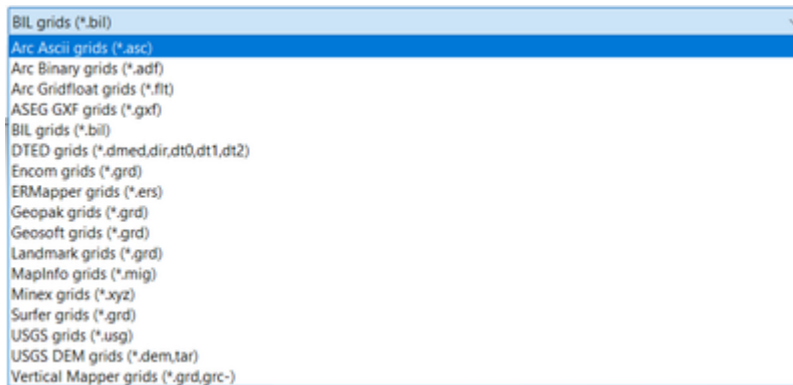
Drillhole data can be interpreted on a section as a raster. First make points on the section from drillhole data, and then create the raster, which can be clipped to the section extents and topography. Any raster on a section can be displayed in 3D. The following methods are available:

- Point to section
- Raster clip to section
- Raster section to 3D



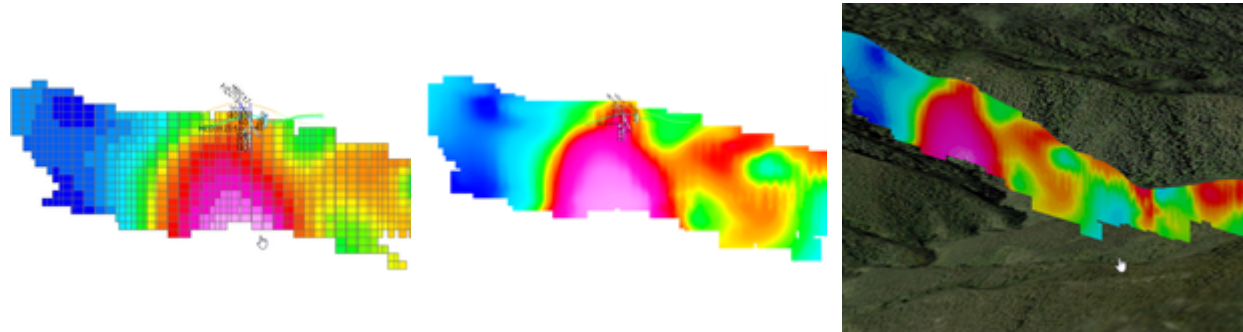
Geophysical Grid Import and Export

The rasters we create in ArcGIS Pro are in ESRI formats. However, quite often, users need to import or export geophysics grids that ESRI does not support. The screenshot below lists the grid types that can be imported and exported.



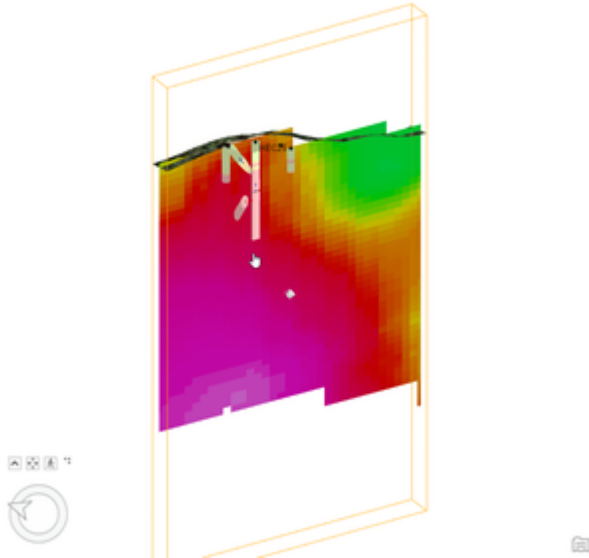
Voxel to Section

You can display NetCDF voxels on a section as polygon vectors or raster images. These images can be sent to 3D using the Raster to 3D tool.



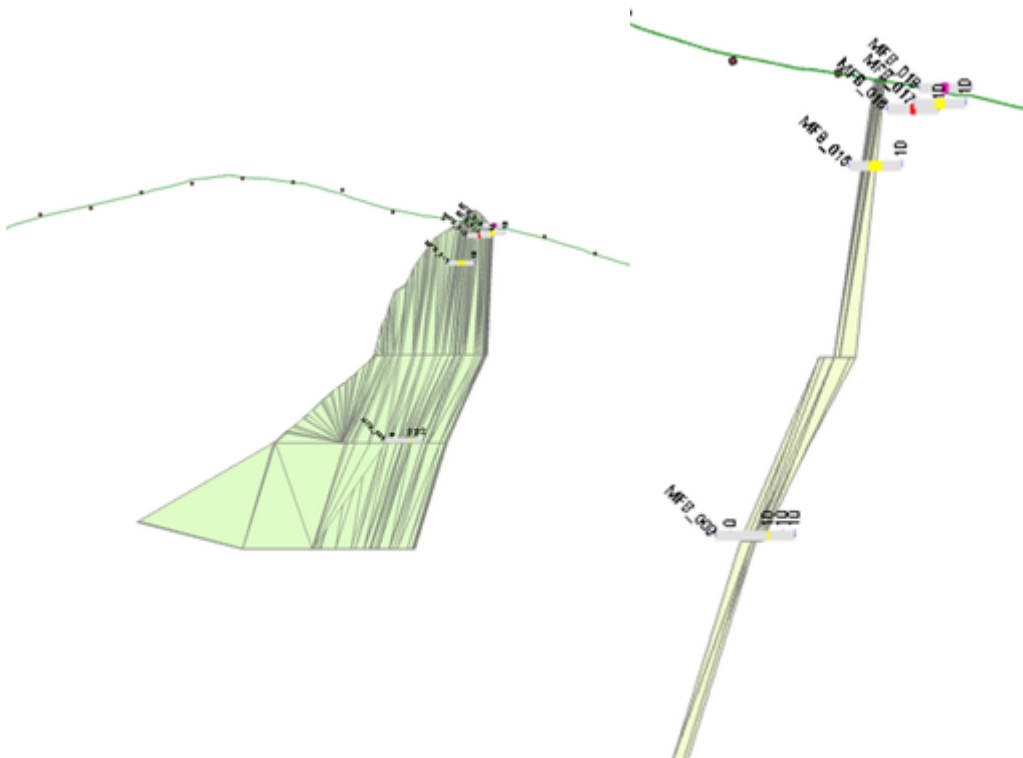
3D Section Clip

You can clip a 3D scene to a section view.



Object to Section

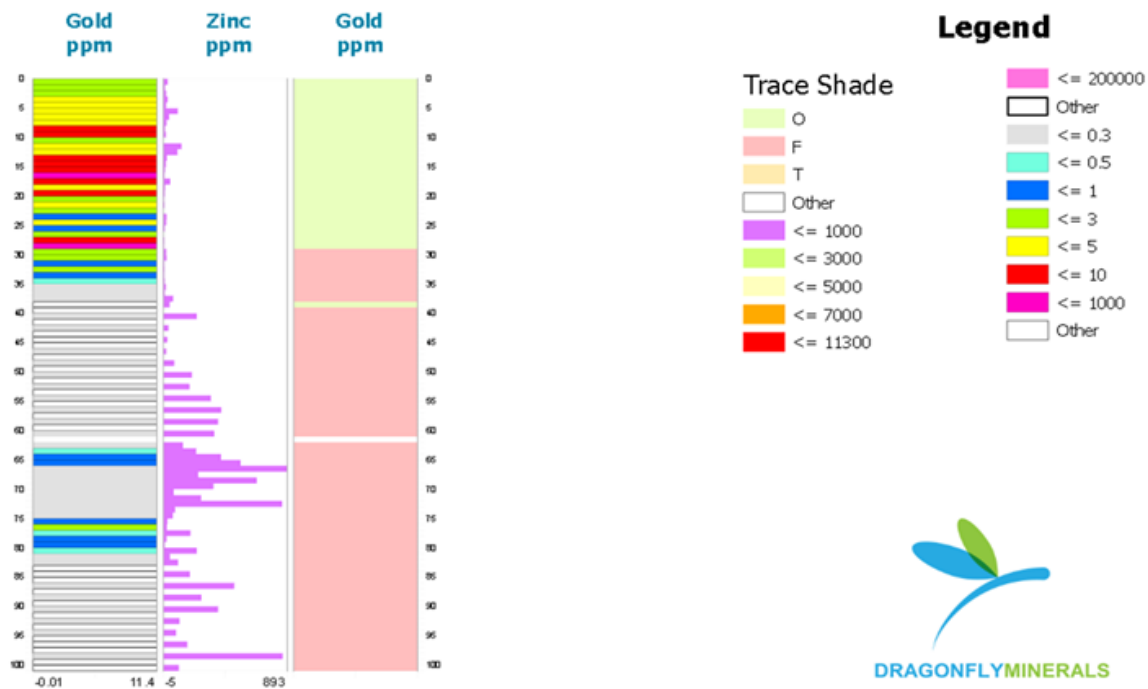
You can add vector objects to a section by projecting a feature onto a section. For example, this is useful for projecting workings onto sections. Objects can be clipped to the section envelope or shown as a whole.



Strip Logs

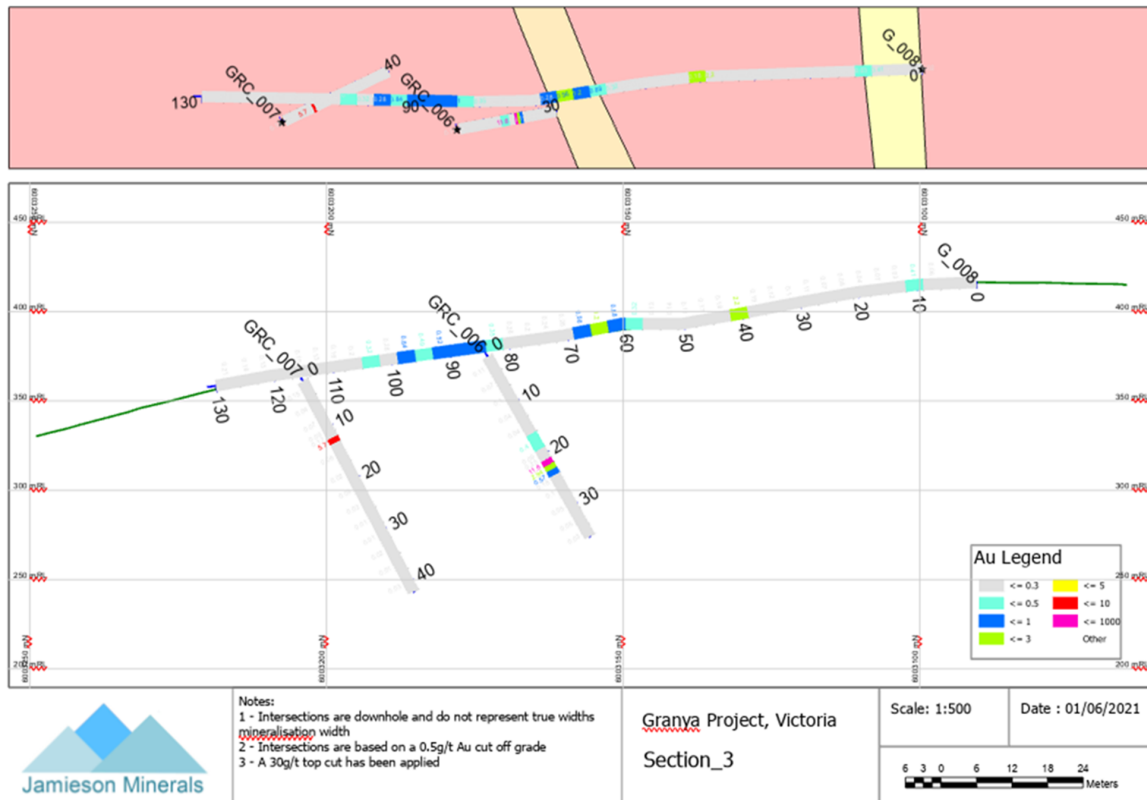
You can create drillhole strip logs from trace shade, bar graphs, or line graphs from downhole drill data. These logs can be output as templated ArcGIS Pro layouts.

DRILLHOLE HEC_001



Section Plan View

When creating a section layout, you can display a section plan view on top of the layout by selecting the Section Plan option.



Correlation Matrix

Geochemical relationships of multivariable data can be determined using Pearson, Kendall's Tau, or Spearman's Rank correlation coefficients and displayed as an output table.

Copper_Hill_Soils_CorMatrix X

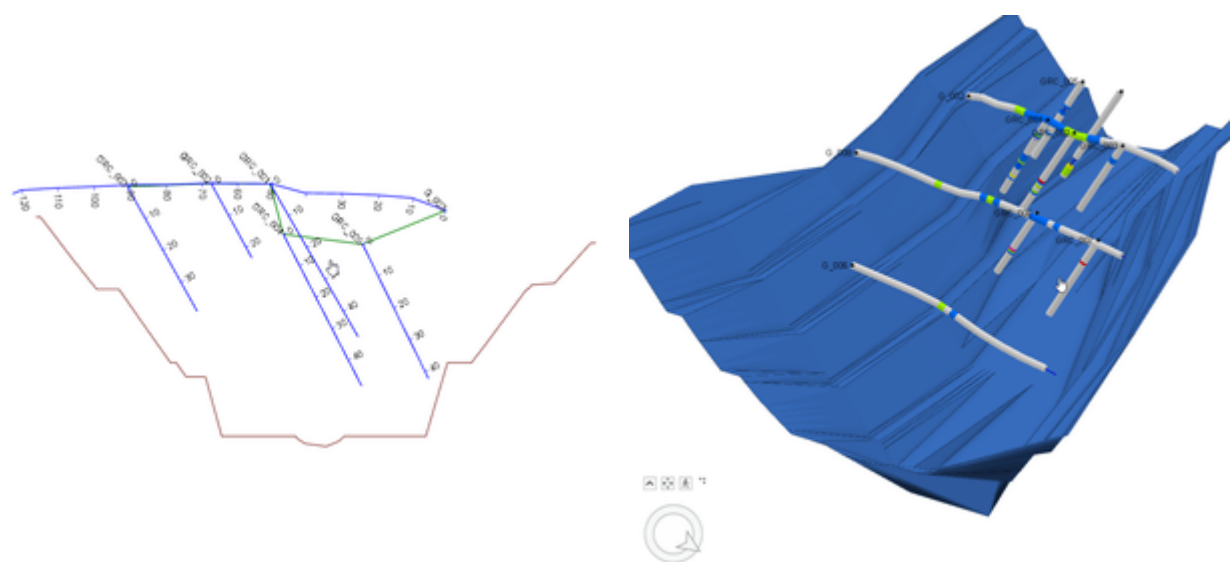
Field: Add Calculate Selection: Select By Attributes Switch Clear

OBJECTID *	Field	Au	Cu	Ag	Pb	Zn
1	Au	1	0.070081	-0.003755	0.013628	0.011941
2	Cu	0.070081	1	0.034961	0.205722	0.248209
3	Ag	-0.003755	0.034961	1	0.04821	0.051264
4	Pb	0.013628	0.205722	0.04821	1	0.5378
5	Zn	0.011941	0.248209	0.051264	0.5378	1

Click to add new row.

Surface from Template

You can create surfaces in 3D from lines on sections.



Datamine enables efficient and sustainable mining through the application of world-leading technology and services.

Read the Docs

docs.dataminesoftware.com

Get in Touch

www.dataminesoftware.com/contact

www.dataminesoftware.com/support

